



era
i n t e r i o r

Portfolio

Educational Buildings Design



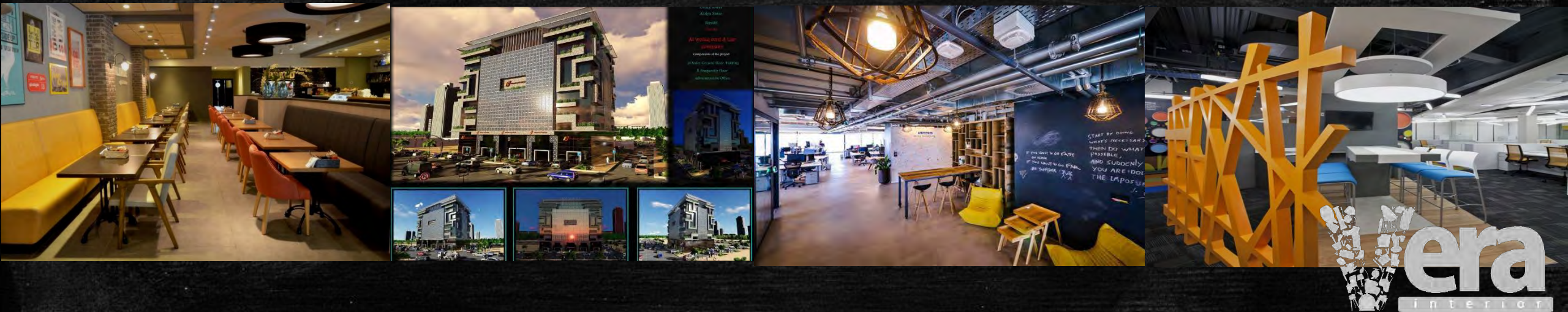
Index

- Vera philosophy
- Vera services
- Educational buildings elements
- Vera method
- Vera contacts



Vera philosophy

- Vera Interiors is a residential, commercial, retail and educational interior design firm based in the Kingdom of Saudi Arabia. Our functional yet luxurious designs, developed in close coordination with our clients, are the result of our commitment to professionalism and our passion for creating spaces in which our clients can live, work and thrive in harmony with their surroundings.



Our services..

- 1- Pre-design measurements and the preparation of engineering plans
- 2-Floor planning, interior design, lighting, power and telephone networks, ceiling, flooring, furnishing
- 3-Work interfaces, engineering projections, and perspectives and sections
- 4-Product design (furniture, lighting units, accessories, etc.)
- 5-Preparation of work schedules and project management assessment and account site work and the engineering examination
- 6-Working drawings
- 7-Technical engineering consultancy or full supervision
- 8-Select furniture, furnishings and accessories, and carry out purchase work
- 9-Take agencies and foreign partnerships

1-Feasibility Studies
a. Interior presentation
b. Furniture presentation
c. Surveying
2-Concept interior design
Preliminary areas division & space planning.
Workspace style
Preliminary furniture plans
Preliminary finishes & material selection
3-Detailed Design and Production
Information & Fit out
Ceiling plan
Raised floors
Suspended ceilings.
Distribution of mechanical and electrical services.
Internal surface finishes.
Blinds.
BOQ
4- FF&E
Final finishes and branding.
Installation of specialist facilities in equipped rooms.
Fitting out areas.
Installation of specialist lighting.
Installation of ICT equipment.
Installation of audio visual equipment.
Fit out of kitchen areas.
Installation of furniture.
BOQ
Preliminaries.
5- Supervision



Educational buildings projects



Educational building contains many kinds of functions for each space:

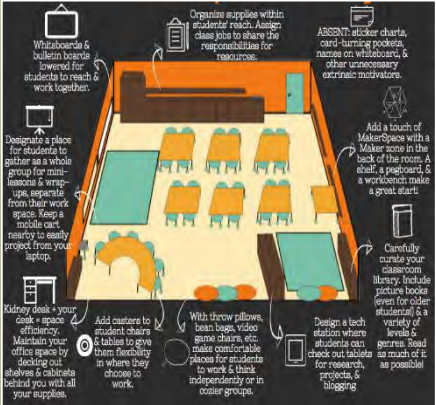
- Study rooms
- Staff rooms
- Equipped rooms
- Activity areas
- Open areas
- Theater & Cinema





Classrooms Staffrooms

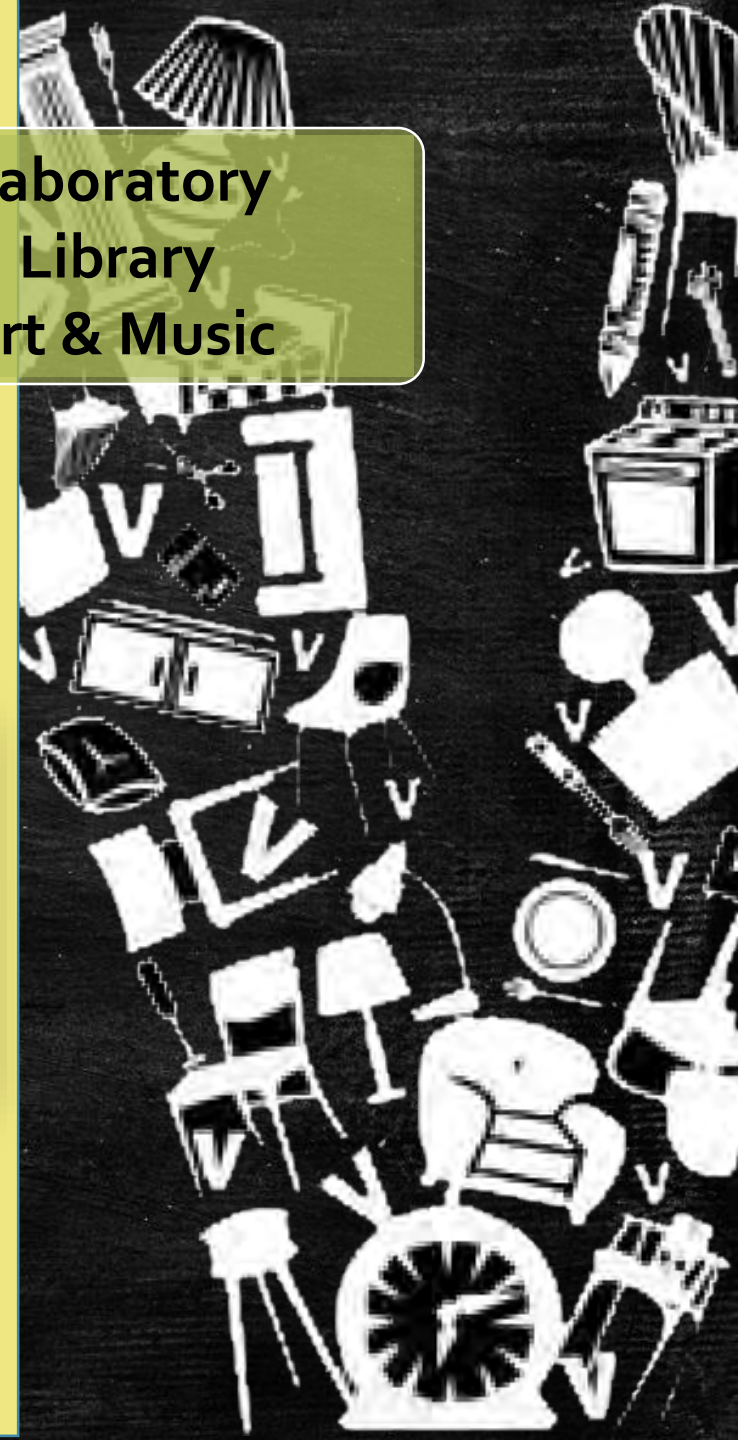
- Educational building contain many kinds of functions for each space depend on activities and students ages.
- We care to make the space fits it's function effectually with safe and comfort paths.
- We also recommend the requirements for each space like materials which meet the duty and durability .





Laboratory Library Art & Music

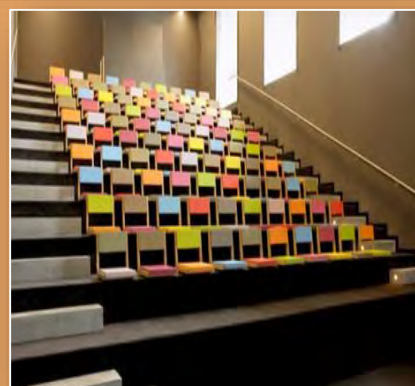
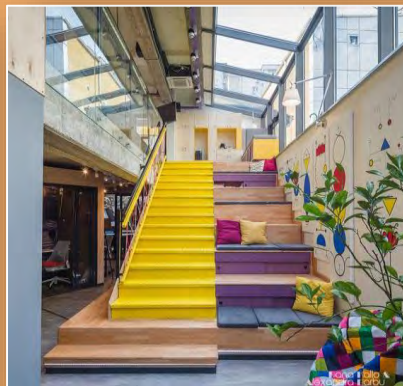
- This equipped spaces need attention for safety details and consider all factors related to the user & equipment's.
- We can't ignore the role of colors ,natural light sources and good ventilation .





Playgrounds Cinema & Theater Gardens

- We recommend the requirements for each space like materials which meet safety, heavy duty and durability .
- The specifications of materials must be as standard and should be clear for the client with the vendor list and suppliers.





Cafeteria
School yard
Service areas

- When it's about eating or personal hygiene it have all attention and concern to keep our kids safe and healthy, So we design this kind of spaces with high standards.

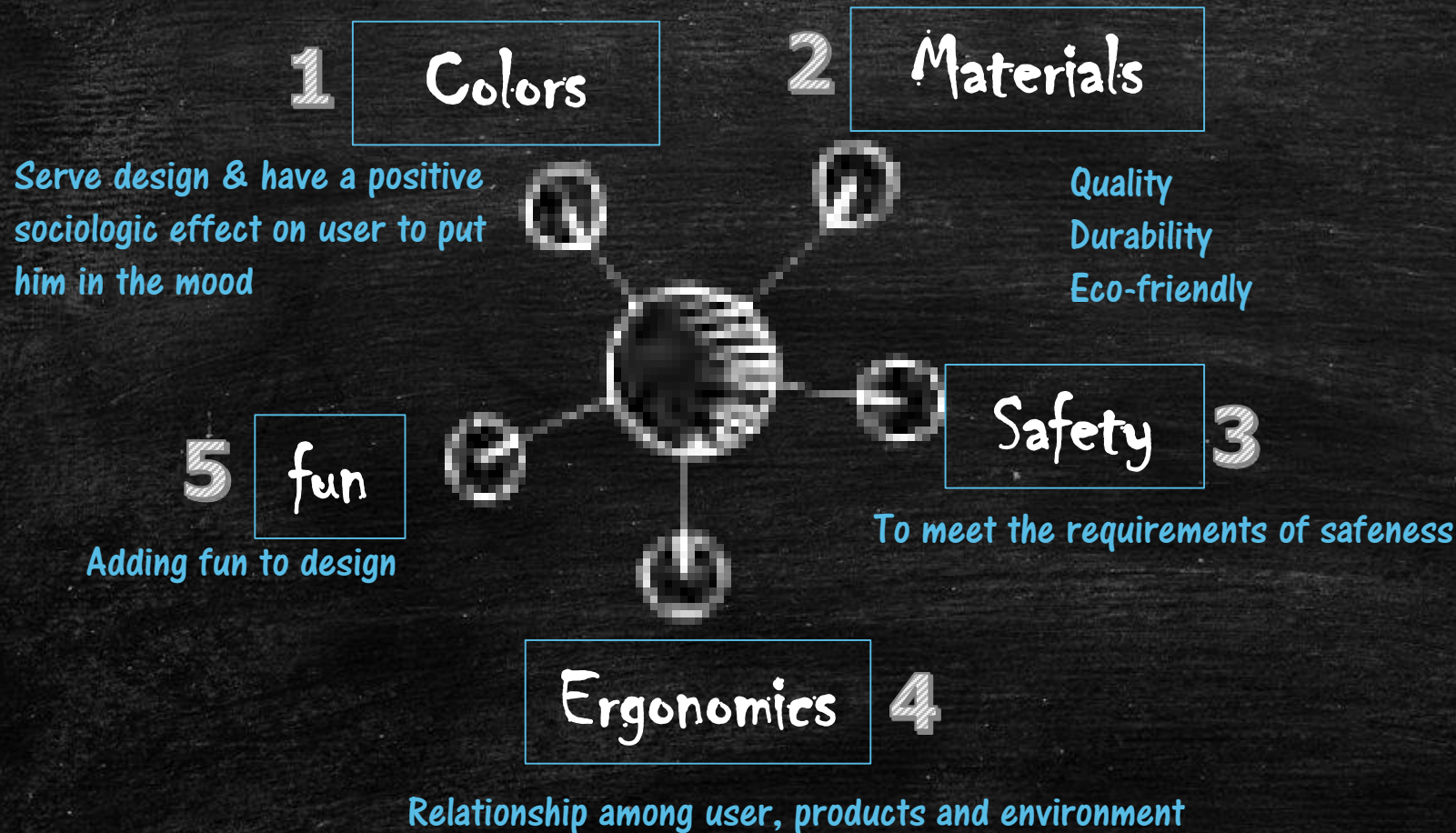




Vera
interior



VERA believes that Design is not just a form, So we focus on function & care about this details :



We also working according to standards

- State Board of Education Rules for Major Capital School Construction Projects, Chapter 61
- Maine Department of Education Space Allocation Workbook
 - Maine Department of Education flowchart and current School Construction Project Workbook for new school construction and major renovation projects
 - NFPA 101 Life Safety Code, NFPA 1 Fire Code, and National Fire Protection Assoc. (NFPA) 13 Sprinkler Code as administered by the State Fire Marshal's Office
 - International Building Code (IBC) • Maine Uniform Building and Energy Code (MUBEC)
 - International Energy Conservation Code (IECC) as required by MUBEC
 - American Society of Heating and Air-Conditioning Engineers (ASHRAE)
 - ASHRAE 90.1-2007 as required by MUBEC
 - ASHRAE 62.1
 - ANSI-ASA ST.60-2010 American National Standard for Acoustic Performance Criteria, design requirements and guidelines for schools
 - Underwriter's Laboratory Fire Resistance Directory
 - National Electrical Code • Maine State Plumbing Code
 - Maine State Elevator and Hoist way Code.
 - All other cross referenced and required industry standards and codes as required by the State of Maine and local jurisdictions governing public school buildings
 - Northeast Collaborative for High Performance Schools (NE-CHPS)
 - U. S. Green Building Council (Leadership in Energy and Environmental Design [LEED])

1

Colors

Colors have a direct effect on user(students) physiology and psychology, So we choose colors carefully for each age and activity in the building.

Example1, Children 6:12 years old prefer primary colors in the following order: Yellow> Blue> White> Red

Example2, Areas of school are recommended to be in this colors:

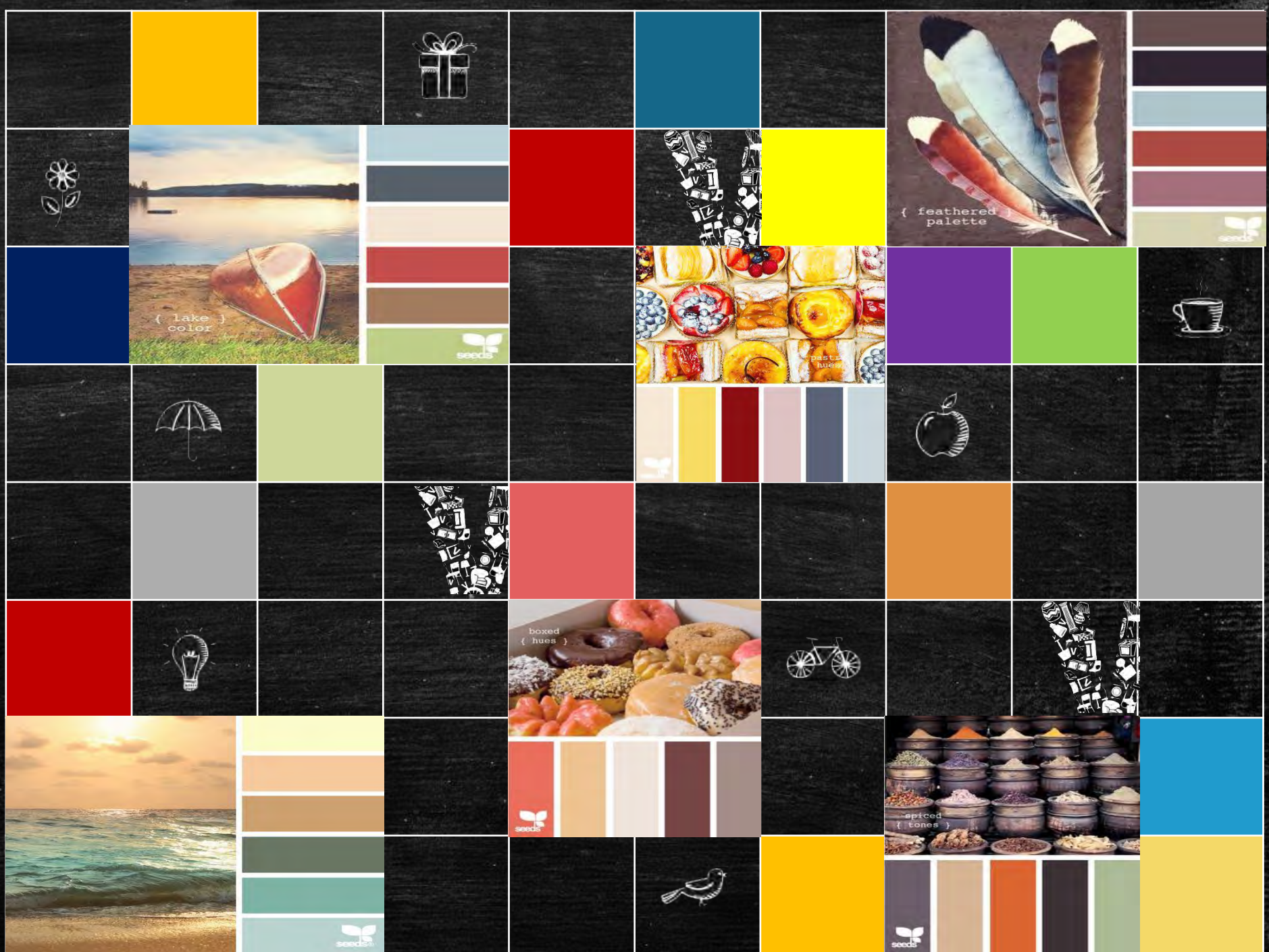
Lab> white for cleanness

Restaurant > yellow for appetite

Play areas > green for energy

Staff rooms > blue for relaxing

Classrooms> depend on age



2

Materials



MEDITERRA
CORK TILE:
HOMOGENEOUS



UNI ECO-STONE



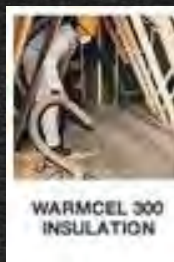
RECOPOL



THERMAFLEECE
INSUALTION



WARMCEL 500
INSULATION



WARMCEL 300
INSULATION



RE-TIRE: BASICS



RE-TIRE: SHADES
OF BLACK



RE-TIRE:
KALEIDOSCOPE



COR-TERRA



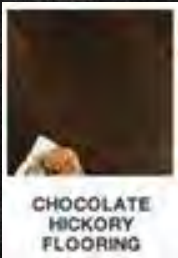
MEDITERRA
CORK TILE:
VENEER



MEDITERRA
CORK TILE:
RIGATO



ORCHARD
WALNUT
FLOORING - ...



CHOCOLATE
HICKORY
FLOORING



CARAMEL
HICKORY
FLOORING



NATURAL
HICKORY
FLOORING



HARD MAPLE
FLOORING



ECO-CLICKS



We care about materials *Quality / Durability / Eco-friendly* very much because it's related with our children health and safety. So we choose materials so carefully and recommend a certified suppliers and advise with high specifications of materials.

3 Safety

Safety starts with design.
Safety starts with design by avoiding some issues, for example:



Wall safety belts



Unfixed furniture



Soft edges
Or Use protector



Sharp edges



Use self closing accessories

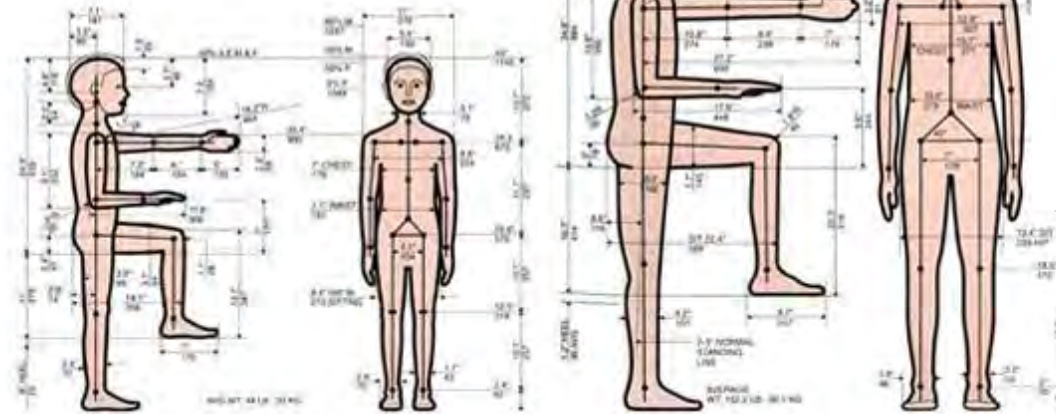


Drawers closing on hands

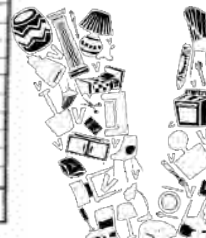
4

Ergonomics

Ergonomics is coordinate the relationship among user, products and environment and that include anthropometrics for every age and user attitude forward his space and products, it's include also the effects on / from environment



STANDING HEIGHT (Cm)				KEY RATIOS FOR EDUCATIONAL ACTIVITIES			DESIGN DIMENSIONS in Cm.				
AGE (years)	MEAN HEIGHT (cm)	BOYS	GIRLS				<p>To provide correct design dimensions and to ensure comfort, the following dimensions are to be used. These are determined by applying the ratios to the different groups also identified as sizes A, B, C & D</p>				
							STANDING HEIGHT RATIO	SIZE A (SH = 132)	SIZE B (SH = 132)	SIZE C (SH = 146)	SIZE D (SH = 161)
5	101	102	100	<p>To suit for the largest number of students while keeping the number of furniture sizes to a minimum, 4 sizes are proposed for primary schools:</p> <p>SIZE A: For pre-primary Av. age = 7 years Av. SH = 112 cm</p> <p>SIZE B: For classes 1 to 3 Av. age = 11.5 years Av. SH = 132 cm</p> <p>SIZE C: For classes 4 to 6 Av. age = 14 years Av. SH = 146 cm</p> <p>SIZE D: For Teachers Age above 18 years Av. SH = 161 cm</p>	0.12	13	16	18	19		
6	107	106	107		0.19	21	25	28	31		
7	112	111	113		0.20	22	26	29	32		
8	116	116	115		0.21	26	30	34	37		
9	122	121	122		0.20	27	32	35	39		
10	126	122	125		0.25	28	33	37	40		
11	130	127	132		0.26	29	34	38	42		
12	136	135	136		0.31	35	41	45	50		
13	140	141	140		0.39	44	51	57	62		
14	147	146	148		0.40	45	53	58	64		
15	154	153	152		0.41	46	54	60	66		
16	156	157	155		0.42	47	55	61	68		
17	159	162	156		0.44	49	58	64	71		
18	161	166	156		0.45	51	60	66	73		
					0.50	56	66	73	81		
					0.60	67	79	88	97		
					0.63	71	83	92	102		
					0.70	78	92	102	113		
				0.71	80	94	104	115			
				0.78	87	103	114	126			
				0.80	90	106	117	129			
				0.84	94	111	123	135			
				0.95	107	126	139	155			
				1.00	112	132	146	161			
				1.02	114	135	149	164			
				1.15	129	152	168	185			
				1.20	134	158	175	193			





Animals



Games



Shapes



Off course its fun to design! And we like to add fun to design.

For example we're showing a funny furniture designed with funny forms . This is considered a big role of design in improving education process by make it more fun and useful.

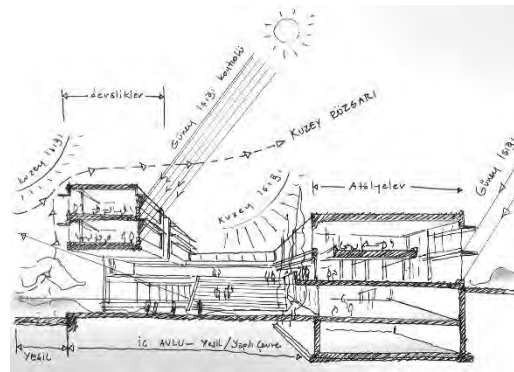
Concept



Perspective



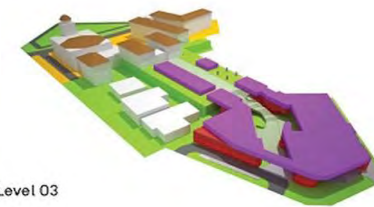
Shop drawings



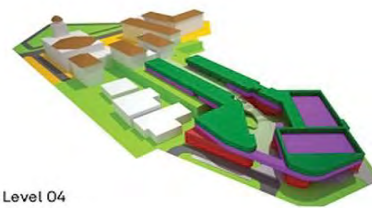
Existing Building



Level 02 and 02



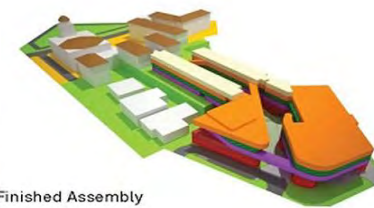
Level 03



Level 04



Level 05



Finished Assembly

Partners

إنماء الطفولة المبكرة
INMA Early Childhood Development



إنماء التعليمية
INMA EDUCATION



vera
interior





Al-Imam Abdullah Ibn Saud Road
Al Nakhla- First floor - Office No. 44
P.O. Box: 18180-Riyadh-11415, Saudi Arabia
Tel. / Fax: +966 1 248 2741

www.verainterior.com

Kids area 2





Al-Imam Abdullah Ibn Saud Road
Al Nakhla- First floor - Office No. 44
P.O. Box: 18180 Riyadh 11415, Saudi Arabia
Tel. / Fax: +966 1 248 2741
www.verainterior.com

Kids area 4

Thank you..



CREATIVITY ART IDEA
FORM
YLE FORM FORM CREATIVE PRO

vera
interior

Al-Imam Abdullah Ibn Saud Road
Exit 9 - Ground floor - Office No. 3,
P.O. Box: 18180 Riyadh 11415
Kingdom of Saudi Arabia

Tel. / Fax: +966 1 248 2741
info@verainterior.com

PERSPECTIVE STYLE ART FORM
ARTIST MODERN COLOR ABSTR
DECORATION STY

www.verainterior.com



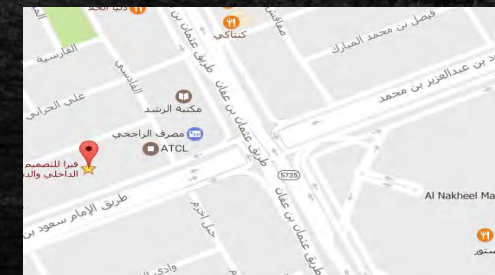
info@verainterior.com



[+966 55 227 0202](tel:+966552270202)



<https://goo.gl/maps/BWACFyediRL2>



Bye

<https://www.facebook.com/Verainterior>

